

FIRE SAFETY 101: EMERGENCY PREPAREDNESS

For more information visit
smmfsc.org to stay informed on the
latest educational material from our
monthly fires safety series

BE PREPARED



Wildfires can happen quickly, leaving little time to react. It is important to always be prepared, but especially on red flag warning days and during peak fire season.

Prepare now by creating and practicing an evacuation plan with your household, assembling an emergency "go bag", and maintaining defensible space.

RED FLAG WARNING DAY

WHAT IS IT?

A red flag warning day is a weather warning issued when there are strong winds, high temperatures, dry conditions, low humidity levels, and/or possibility of lightning strikes. A warning signifies a high risk of fire, therefore residents should be prepared and ready to evacuate if necessary.

RISKS

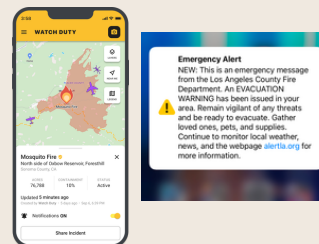
On high advisory days, do not perform any actions that could produce a spark. For example smoking, starting campfires, using power tools, or using tire chains.



ALERTS AND EVACUATIONS

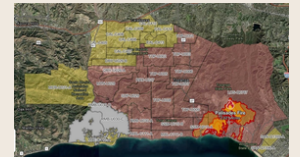
STAY IN THE KNOW

Follow the latest updates and changes. Check out [WatchDuty](#), [Alert LA County](#), [Notify LA](#), and [EPIC Calabasas](#).



EVACUATION ROUTES

Know what evacuation zone you are in. Check out [Genasys](#) to learn your zone or the [LA Fire Dept](#) for zones and alerts



GO BAG CHECKLIST

- A 3-day supply of non-perishable food & 3 gallons of water per person
- A map with at least 2 evacuation routes
- Necessary prescriptions or medications
- A change of clothes & extra eyeglasses/contact lenses
- Extra car keys, credit cards, cash, or traveler's checks
- A first aid kit & sanitation supplies
- A flashlight & battery-powered radio with extra batteries
- Copies of important documents (birth certificates, passports, etc.)
- Pet food & water

[Learn more here](#)

DEFENSIBLE SPACE

- Move combustibles out of Zone Zero (0-5 ft). This includes garbage bins, doormats, outdoor cushions, propane grills, etc.
- Clean gutters
- Clear debris and dry vegetation around the home
- Close all windows and doors
- Protect wooden fences/gates — If attached to your home, prop gates open to break the fire path.

RESOURCES

Check out
readyforwildfire.org
for more tips and
watchduty.org
to stay informed

